

SCOTTSDALE AIRPARK - OFFICES AT RAINTREE CENTER

OFFICE CONDOMINIUM FOR LEASE ±3,350 SF

8970 E RAINTREE DRIVE • SUITE 300 • SCOTTSDALE, AZ 85260

FEATURES

- RECEPTION
- CONFERENCE/FLEX AREA
- SEVEN (7) OFFICES
- KITCHEN
- FLEX SPACE
- TWO (2) BUILT-IN CUBICLES
- COMMON AREA RESTROOMS
- UNIQUE BRICK INTERIOR WALLS
- LIGHT AND BRIGHT!
- EASY ACCESS OFF LOOP 101 FREEWAY / RAINTREE INTERCHANGE

**FURNITURE INCLUDED
AT TENANT'S OPTION**

For more information or to schedule a tour please contact



John Quatrini
Associate Broker
C 602.859.0506
john@shellcommercial.com



Suzanne Enright
Senior Associate
C 602.471.2981
suzanne@shellcommercial.com



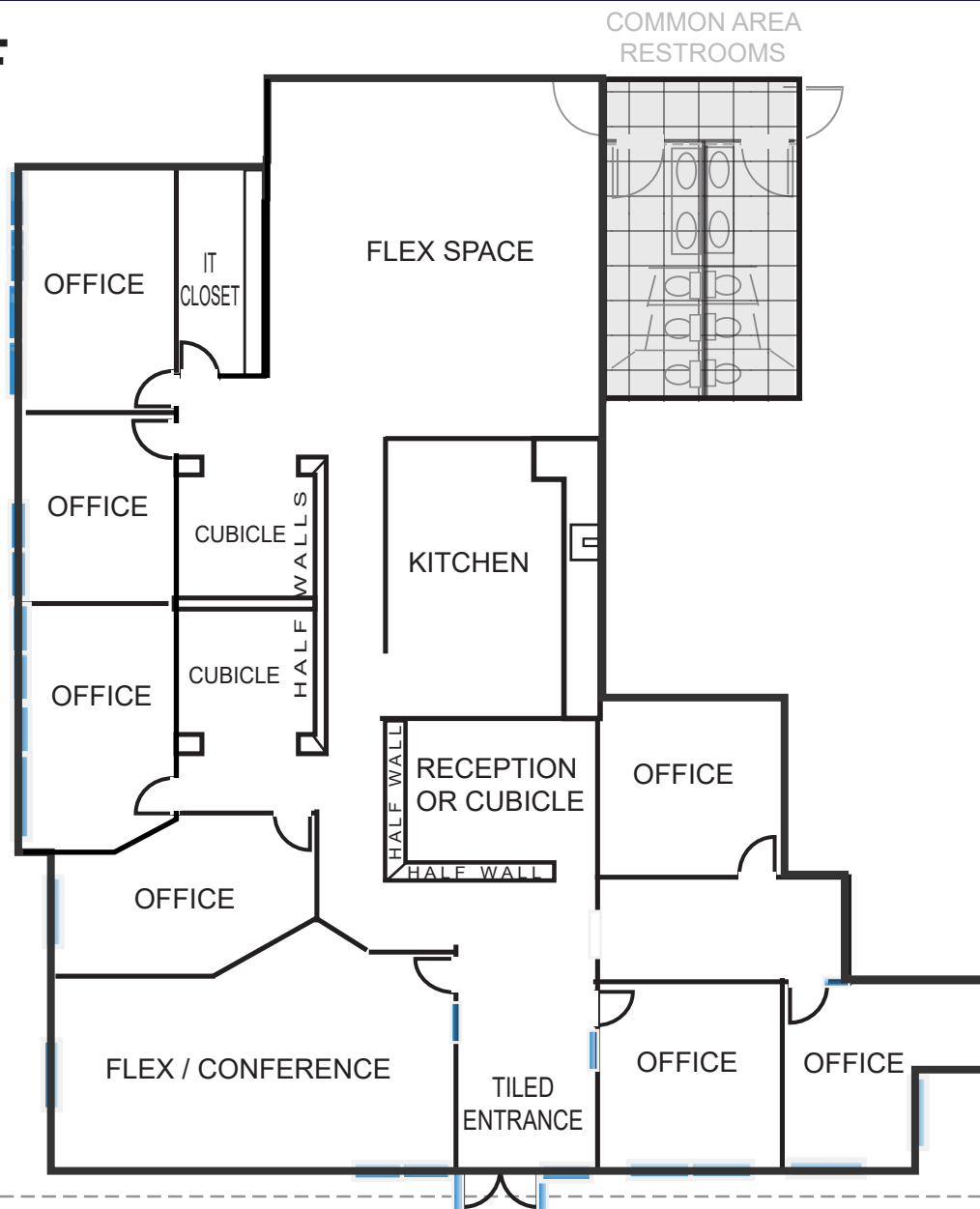
SHELL
Commercial Investment Real Estate

0 480 443 3992 16410 N 91st St
Suite 112 Scottsdale, AZ 85260

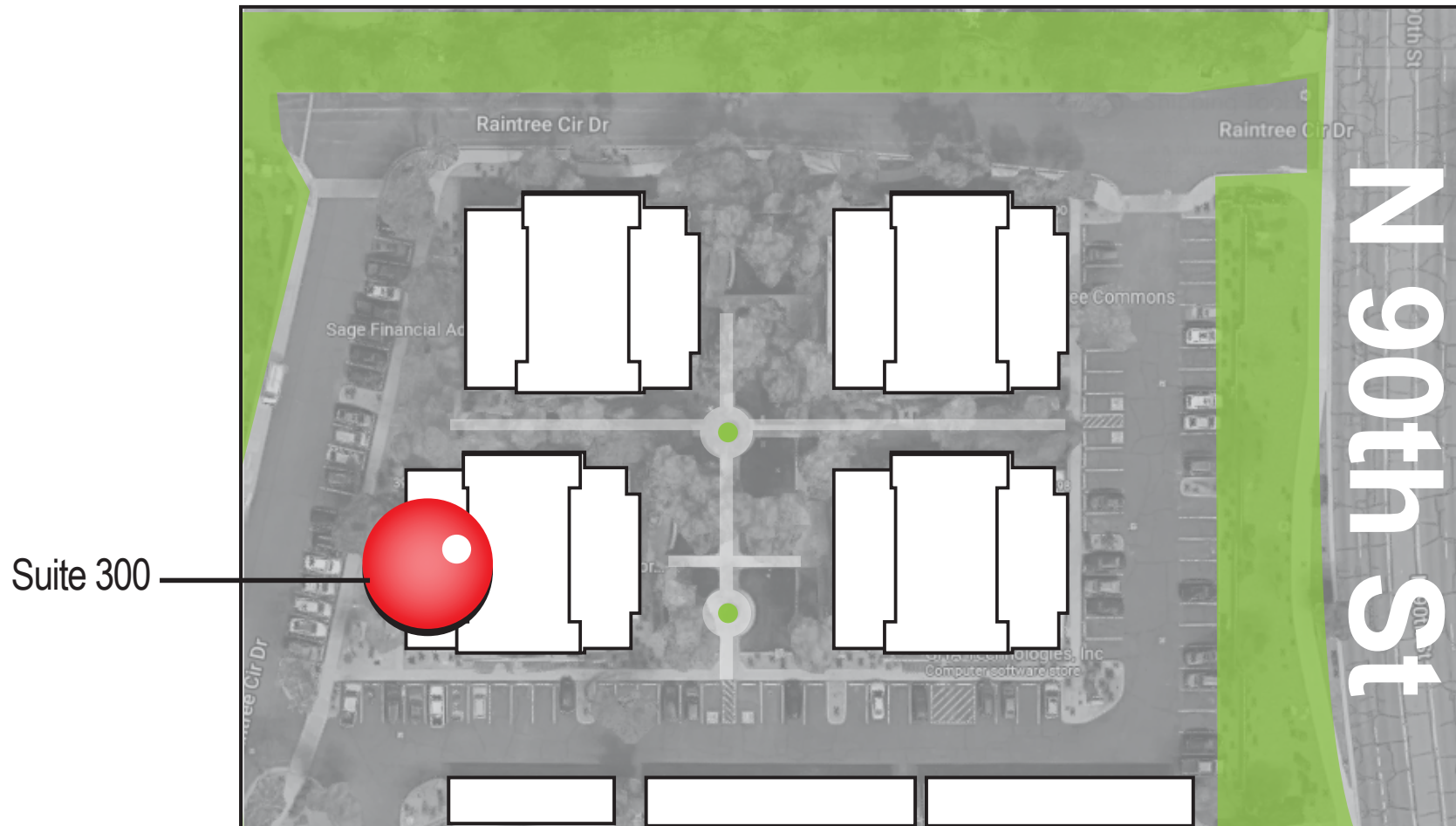
The above is subject to prior sales and leasing. This information has been secured from sources we believe to be reliable, but we make no representation or warranties, expressed or implied as to the accuracy of this information.

Beautifully Furnished!



3,350± SF**PARKING**

OFFICES AT RAINTREE CENTER





- Easy access to Loop 101 Freeway on-ramp/off-ramp at Raintree Drive
- Surrounded by North Scottsdale's finest amenities and shopping destinations, including Scottsdale Quarter, Kierland Commons, and the Scottsdale

SUBJECT

